

Name _____ Score _____

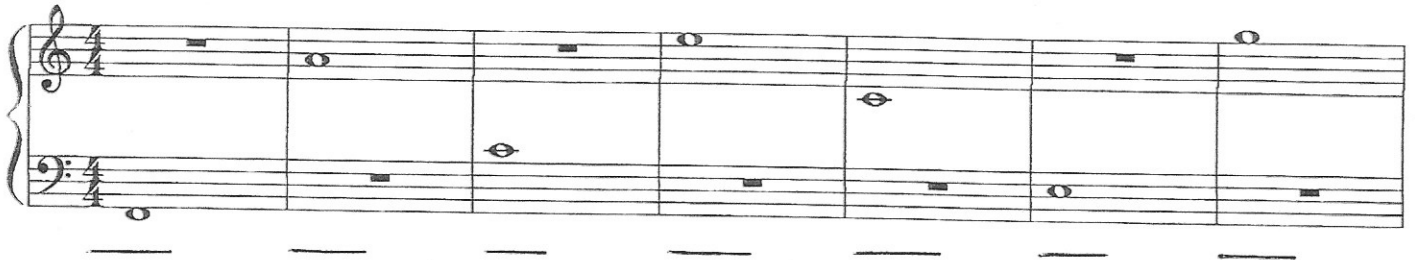
(65 points possible)

Study Test C

(45 points on p.1)

(20 points on p.2)

1. Write the letter names of these notes: (7 points)



A musical staff in 4/4 time with a grand staff (treble and bass clefs). The notes are: Treble clef: measure 1 (whole rest), measure 2 (half note G4), measure 3 (whole rest), measure 4 (half note G4), measure 5 (whole rest), measure 6 (half note G4), measure 7 (whole rest). Bass clef: measure 1 (half note C3), measure 2 (whole rest), measure 3 (half note C3), measure 4 (whole rest), measure 5 (half note C3), measure 6 (whole rest), measure 7 (half note C3).

2. Identify these intervals. (8 points)



A musical staff with the following intervals: C4 to D4 (second), D4 to E4 (second), E4 to G4 (third), G4 to A4 (second), A4 to B4 (second), B4 to C5 (third), C5 to B4 (seventh), B4 to A4 (second), A4 to G4 (second).

3. Write the 5 finger patterns starting on these keys: (20 points)

C Major C _____

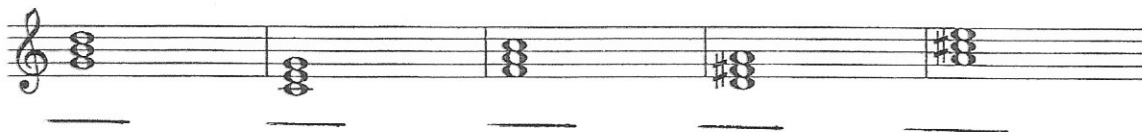
D Major D _____

G Major G _____

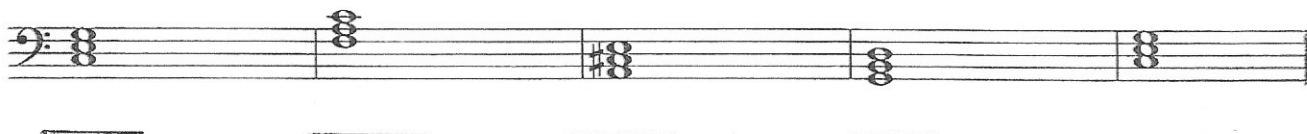
A Major A _____

E Major E _____

4. Name the following major chords: (10 points)



A musical staff with five major chords: C major, D major, E major, F major, G major.

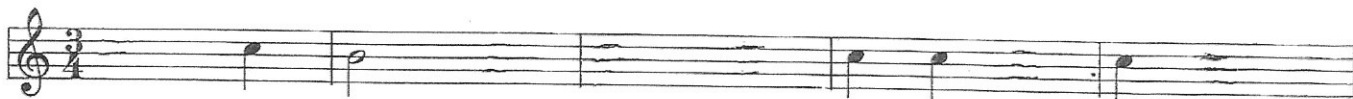
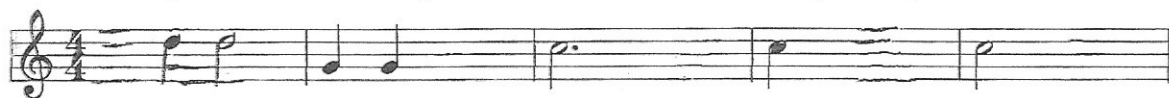


A musical staff with five major chords: A major, B major, C major, D major, E major.

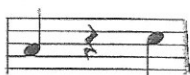
_____ points on p. 1 (45 points possible)

Study Test C Page 2

5. Add only 1 note to complete each measure. (10 points)



6. Circle the correct time signature. (4 points)



7. Match the music symbols. (6 points)

mf

Quarter Rest

mp

Mezzo Forte (Medium Loud)



Tied notes



Mezzo Piano (Medium Soft)

Repeat Sign



Fermata



_____ points on p. 2 (20 points possible)